

# 2022

## Overview

Overview		
	2021	2022
<b>Saldo</b>	525,01€	1262,33€
	<b>Difference</b>	+737,32€

## Income

Income		
<b>Donations</b>	3058,81€	
<b>Membershipfee</b>	680,00€	
<b>Food and Drinks</b>	891,00€	
	<b>TOTAL</b>	4629,81€

## Expenses

Expenses		
<b>Administration</b>	30,00€	
<b>IT</b>	2710,34€	
<b>Infrastructure</b>	1051,65€	
<b>Food and Drinks</b>	100,50€	
	<b>TOTAL</b>	3892,49€

# 2021

## Overview

Overview		
	2020	2021
<b>Saldo</b>	1094,58€	525,01€
	<b>Difference</b>	-569,57€

## Income

Income		
<b>Donations</b>	2462,63€	
<b>Membershipfee</b>	1560,00€	
<b>Food and Drinks</b>	489,00€	
	<b>TOTAL</b>	4511,63€

## Expenses

Expenses		
Administration	2030,10€	
IT	1695,20€	
Infrastructure	1276,65€	
Food and Drinks	79,25€	
	<b>TOTAL</b>	5081,20€

## 2020

### Overview

Overview		
	2019	2020
Saldo	1542,61€	1094,58€
	<b>Difference</b>	-448,03€

### Income

Income		
Donations	2724,21€	
Membershipfee	1441,00€	
Food and Drinks	3216,76€	
	<b>TOTAL</b>	7381,97€

## Expenses

Expenses		
Administration	871,12€	
IT	2521,00€	
Infrastructure	2548,66€	
Food and Drinks	1889,22€	
	<b>TOTAL</b>	7830,00€

## 2019

### Overview

Overview		
	2018	2019

Overview		
<b>Saldo</b>	446,52€	1542,61€
	<b>Difference</b>	+1096,09€

## Income

Income		
<b>Donations</b>	2218,04€	
<b>Membershipfee</b>	1400,00€	
<b>Food and Drinks</b>	3791,67€	
	<b>TOTAL</b>	7409,71€

## Expenses

Expenses		
<b>Administration</b>	917,65€	
<b>IT</b>	2023,57€	
<b>Infrastructure</b>	1765,83€	
<b>Food and Drinks</b>	1606,57€	
	<b>TOTAL</b>	6313,62€

# 2018

## Overview

Overview		
	2017	2018
<b>Saldo</b>	829,04€	446,52€
	<b>Difference</b>	-382,52€

## Income

Income		
<b>Donations</b>	1588,43€	
<b>Membershipfee</b>	1026,00€	
<b>Food and Drinks</b>	3911,71€	
	<b>TOTAL</b>	6526,14€

## Expenses

Expenses		
<b>Administration</b>	105,97€	
<b>IT</b>	4230,85€	
<b>Infrastructure</b>	995,95€	
<b>Food and Drinks</b>	1575,89€	

	<b>TOTAL</b>	6908,66€
--	--------------	----------

# 2017

## Overview

Overview		
	2016	2017
<b>Saldo</b>	2089,78€	829,04€
	<b>Difference</b>	-1260,74€

## Income

Income		
<b>Donations</b>	1974,06€	
<b>Membershipfee</b>	1075,00€	
<b>Food and Drinks</b>	2301,00€	
	<b>TOTAL</b>	5350,06€

## Expenses

Expenses		
<b>Administration</b>	926,07€	
<b>IT</b>	2487,38€	
<b>Infrastructure</b>	1610,31€	
<b>Food and Drinks</b>	1587,04€	
	<b>TOTAL</b>	6610,80€

# 2016

## Overview

Overview		
	2015	2016
<b>Saldo</b>	580,82€	2089,78€
	<b>Difference</b>	+1508,96€

## Income

Income		
<b>Donations</b>	2543,18€	
<b>Membershipfee</b>	1245,00€	

<b>Income</b>		
<b>Food and Drinks</b>	5365,48€	
	<b>TOTAL</b>	9153,66€

## Expenses

<b>Expenses</b>		
<b>Administration</b>	896,28€	
<b>IT</b>	1581,89€	
<b>Infrastructure</b>	2062,10€	
<b>Food and Drinks</b>	3104,43€	
	<b>TOTAL</b>	7644,70€

## BTC

<b>BTC</b>		
	<b>2015</b>	<b>2016</b>
<b>Saldo</b>	291.04 mBTC	393.88 mBTC
	<b>Difference</b>	+102.84 mBTC

## 2015

Saldo begin 2015: 297,50€

Saldo end 2015: 580,82€

Donations received: 9,52€

## Biggest expenses

Storage rental fees for a year: 2.490,00€

Server payments sum up to: 0€ - Server donated by [Visual Online](#)

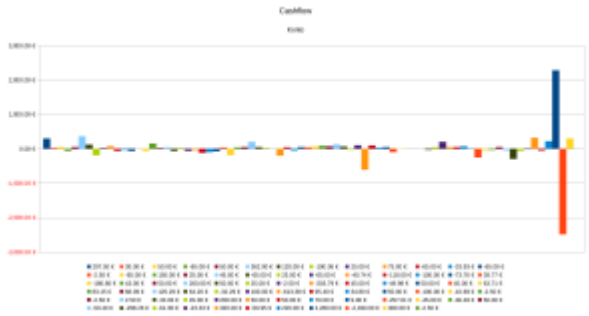
## Biggest Income

Server farm management for a third party: 2.280,00€

## BTC

Saldo begin 2015: 0,00000000 BTC

Saldo end 2015: 0,29104273 BTC



# 2014

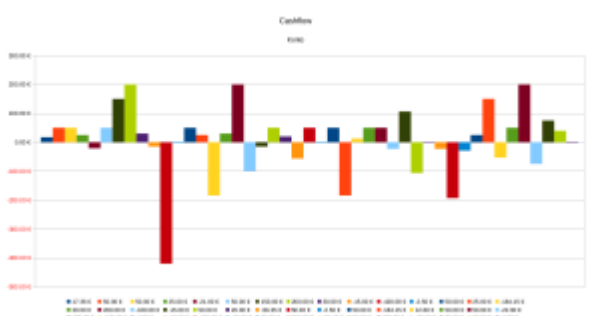
Saldo begin 2014: 17,36€  
Saldo end 2014: 297,50€  
Donations received: 534,50€

## Biggest expenses

Radio show payment for a year: 420,00€  
Server payments sum up to: 561,65€

## Biggest Income

Hack.lu income from our booth: 200€



# 2013

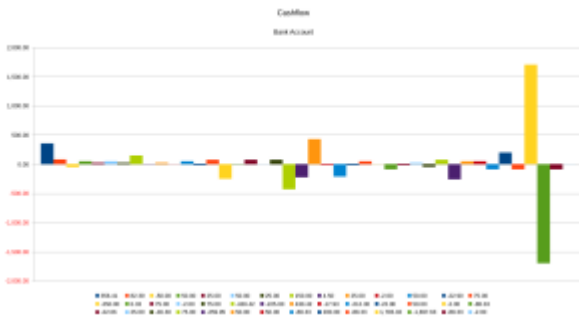
Saldo begin 2013: 356,41€  
Saldo end 2013: 17,36€  
Donations received: 584,12€

# Biggest expenses

Server payment for a year: 430,42€  
 Stuff for the Freedom Not Fear Demo: 437,30€  
 Ultimaker: 1697,63€

# Biggest Income

Escher Commune payment for workshops: 1706,02€



From:  
<https://wiki.c3l.lu/> - **Chaos Computer Club Lëtzebuerg**

Permanent link:  
<https://wiki.c3l.lu/doku.php?id=organization:finances:transparency-reports&rev=1677453107>

Last update: **2023/02/27 00:11**

