

Crystal growing



Name	Crystal growing
Description	Experimenting with crystal growing
Status	Runnig
Contact	metalgamer
Participants	
Repository	

Copper Sulfate



Picture 1.1: Materials

The first crystals, that we are growing are copper sulfate crystals. They give an intense blue color and are quite easy to grow. For this, we need to acquire [Copper\(II\)-sulfate pentahydrate](#). The chemical formula is: $\text{CuSO}_4 \cdot 5 \text{H}_2\text{O}$

Gather your materials:

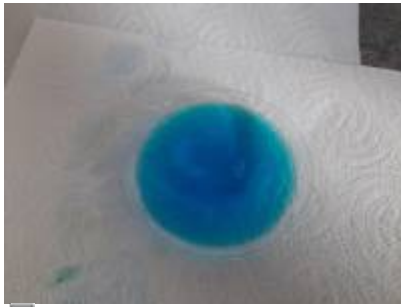
- Copper(II)-sulfate pentahydrate
- Water
- Beaker
- Glass dish
- Spoon



Picture 1.2: Finished solution of Copper(II)-sulfate pentahydrate

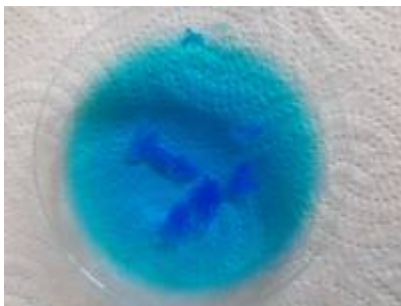
Begin with boiling about 800ml of water. When it is boiling, transfer it to the beaker and start adding Copper(II)-sulfate pentahydrate until nothing will dissolve anymore. It should have a deep blue color, see picture 1.2.

Pour a little of the solution onto the glass dish, this will be used to grow some seed crystals. See picture 1.3.

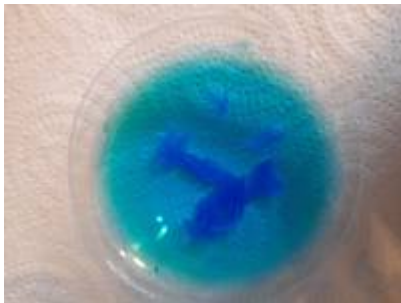


Picture 1.3: Solution on glass dish

Now, we have to wait, until we have seed crystals:



Picture 1.4: After 2 hours



Picture 1.5: After 3 hours

After about 3 hours, we can pick out one of the seed crystals and fix them to a piece of string (picture 1.5).



Picture 1.6: Seed crystal on string



Picture 1.7: Seed crystal in solution

This seed crystal can now be hung into the solution and let it sit overnight.



Picture 1.8: Crystal after growing overnight



Picture 1.9: Polycrystals of Copper(II)-sulfate pentahydrate

The next day, take out your polycrystals and filter the solution. Use a cotton pad in your funnel.



Picture 1.10: Filtering



Picture 1.11: Filtering with cotton pad

Clear out the bottom of the beaker, as a lot of crystals have grown on it.



Picture 1.12: Crystals on bottom of beaker

After the solution has been filtered, pour it back into the beaker and hang your polycrystal back into it.



Picture 1.13: Crystals in solution after filtering

From:
<https://wiki.c3l.lu/> - **Chaos Computer Club Lëtzebuerg**

Permanent link:
https://wiki.c3l.lu/doku.php?id=projects:science:crystal_growing&rev=1595873868

Last update: **2020/07/27 20:17**

